

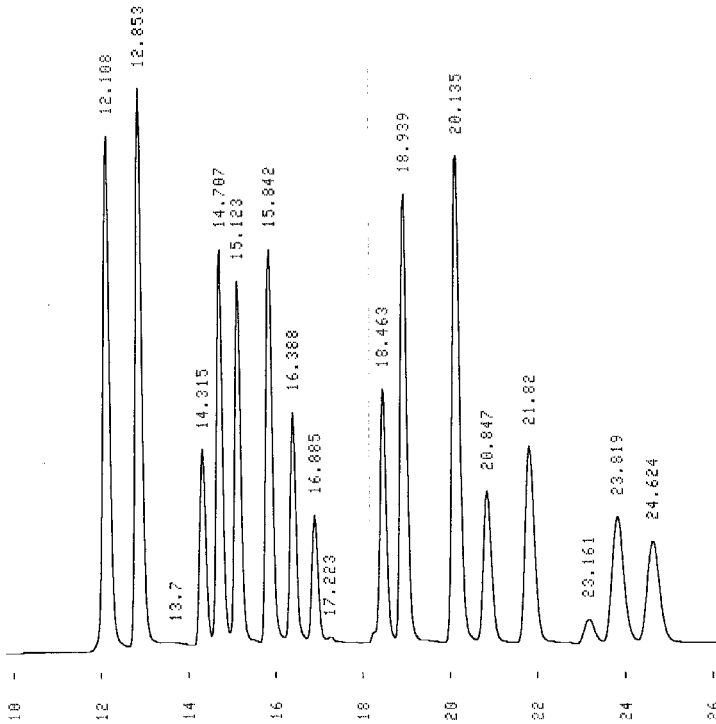
## Analytic News für das HPLC-Labor

### PAH - analyses with methanol as eluent

Dear customer,

in the last time it seems difficult to purchase acetonitrile with low costs. Therefore note, that our PAH columns can be used with methanol as eluent also.

The complet analytical conditions you receive along with the new column.



Packing	UltraSep ES PAH
Column	250x3mm
Detection	UV 254 nm
Eluent	water/methanol for HPLC
Gradient	linear
Flow	0,4 ml/min
Sample	Supelco PAH Mix
Pressure	130 bar

Naphthalene	12.108 min
Acenaphthylene	12.853 min
Acenaphthene	14.315 min
Fluorene	14.707 min
Phenanthrene	15.123 min
Anthracene	15.842 min
Fluoranthene	16.388 min
Pyrene	16.885 min
Benz(a)anthracene	18.463 min
Chrysene	18.939 min
Benzo(b)fluoranthene	20.135 min
Benzo(k)fluoranthene	20.847 min
Benzo(a)pyrene	21.820 min
Dibenz(a,h)anthracene	23.161 min
Benzo(g,h,i)perylene	23.819 min
Indeno(1,2,3-c,d)pyrene	24.624 min

=====

Literature:

G. J. Eppert, HPLC Troubleshooting, SEPARATION SERVICE BERLIN 2003, S. 60

G. J. Eppert, Flüssigchromatographie, HPLC - Theorie und Praxis, SPRINGER 1997, S. 294

15.01.09